

# S 795



**Advanced touch-screen  
wheel balancer for truck wheels**



## TOUCHSCREEN

Large 22" touch-screen monitor with intuitive graphical user interface, for simplifying and speeding up program selection and balancing operations.



## WHEEL DIMENSION



Intelligent system for measuring distance and wheel diameter **up to 30"**, equipped with the **Quick Program (QP)** and the new **Laser X pointer**. The FSP automatically activates balancing programs, while the Laser X pointer improves accuracy and visibility when identifying the inner planes of the rim, for an optimized balancing process.

## WIDE WEIGHT TRAY AND MULTIFUNCTION BUTTON

Rotational weight tray with multiple compartments to efficiently organise counterweights and tools.

The tray features a **one-touch button** to facilitate the **quick selection** of work programs, **improving the efficiency of operations**.



## NEXT-GENERATION SPIN AND MEASURING SYSTEM

Low-speed balancing cycle to reduce spin times, minimise any risks related to moving parts and save energy.

It is suitable for all wheel types of heavy-duty, light, off-road and car vehicles, **ensuring precision and reliability**.

### DPA AND ELECTROMAGNETIC BRAKE

The Direct Positioning (**DPA**) function automatically sets the wheel in the correct balancing position at the end of the spin cycle, eliminating intermediate stops.

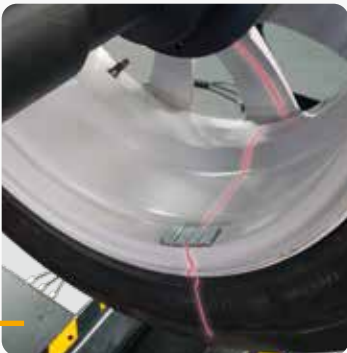
The **electromagnetic brake** simplifies the cleaning and application of the counterweights, making the mounting and demounting of the wheel **more efficient and less tiring**.



### APPLICATION OF ADHESIVE COUNTERWEIGHTS

Adhesive counterweights can be applied in three different ways, depending on your preference:

- Ergonomically at **5 o'clock** using the new Laser Line System pointer.
- Manually at **6 o'clock**.
- Manually at **12 o'clock**, following the traditional method



### ES-7 (OPTIONAL)

The sonar sensor (**ES-7**) automatically measures the wheel width without contact.

**No manual entry by the operator is required.**



### INTEGRATED LED ILLUMINATOR

The **LED illuminator** improves visibility of the work area to **facilitate rim cleaning** and the **application of counterweights**.



## SPACE SAVING WHEEL GUARD

designed to allow the positioning along the wall, it also permits to hold wheels up to **52"** (1.321 mm) maximum diameter

## INCLINED FRONT PART

to improve operator access to the inside of the rim



## INTEGRATED WHEEL LIFTING SYSTEM

Integrated low-profile pneumatic lifting system, manually operated without pedals. It easily lifts **wheels of up to 300 kg**, ensuring perfect centring. **Ergonomic, robust and fast.**

## WEIGHT REDUCTION EVO



**Special collection of useful programs** that optimise the positioning of balancing counterweights, guaranteeing accurate results with

less material usage and improving service efficiency. The ideal solution for a **faster**, cheaper and **more sustainable balancing service**.



## ADVANCED DIAGNOSIS

The **S 795 wheel balancer**, when equipped with **optional SONAR sensors**, can also be used as an **advanced diagnostic tool**. With its three diagnostic programs, it is able to identify and even resolve geometric wheel defects, eliminating vibrations that cannot be corrected in traditional balancing

### WHEEL ECCENTRICITY & BEST FIT

The Radial Runout Sensor-Wheel (**RRS-W**) automatically detects the radial eccentricity of the wheel.

The **BESTFIT** software uses this data to display the point of greatest deviation on the screen, thus facilitating optimal positioning on the vehicle hub.

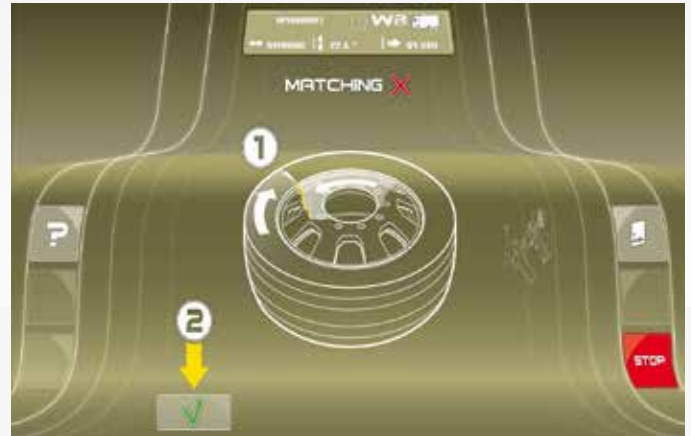
The Lateral Runout Sensor-Wheel (**LRS-W**) measures the lateral eccentricity of the tyre to ensure perfect alignment.



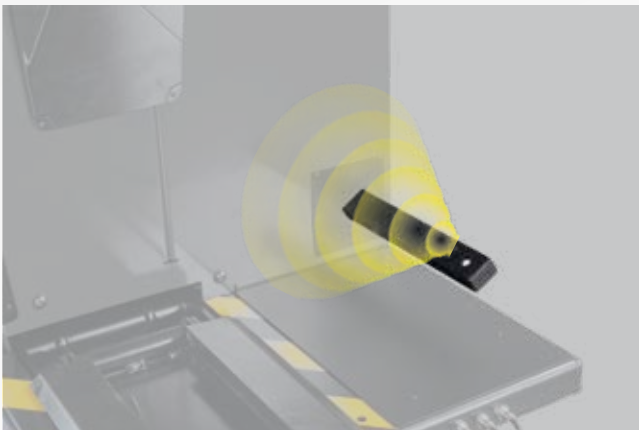
## FAST MATCHING

The **FAST MATCHING** function automatically calculates the **optimal match-mounting between rim and tyre, improving vibration reduction, increasing safety and prolonging tyre life.**

The **RRS-W** and **RRS-R** diagnostic kits are required to activate this function.



## RRS-W



## RRS-R



## SPECIAL FUNCTIONS AND PROGRAMS

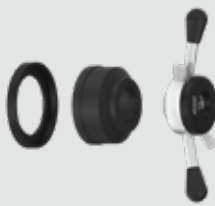
Wide range of programs for an easy and immediate use of the machine, including:

- **7 balancing programs** for alloy rims for truck and car wheels, Dynamic, Static, Hidden weight
- **2 working environments**
- **Multi-operator**
- **Imbalance optimisation** (Opt Flash)
- **AWC**
- **Software update via USB.**

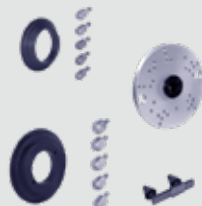
## DOTATION



## RECOMMENDED ACCESSORIES



**8-21100275\_GTR40 EVO**  
Premium steel quick nut  
Ø 40x4 mm (for MO).



**8-21100269\_ART40 EVO**  
Premium Heavy-Duty  
adaptor Kit  
(10-8-6 hole).



**8-21100268\_KCT40 EVO**  
Heavy-Duty cone Kit.



**8-21101402\_**  
**ACCESSORY RACK**  
Handy accessory  
holder support.



**8-21100141\_DX\_CBF**  
DX/CBF Centring accessory for  
van and off-road wheels with  
central hole with Ø 117±173 mm



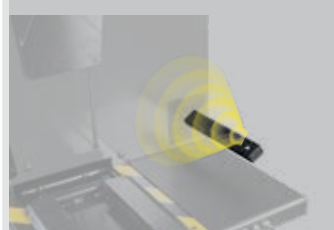
**8-21900191\_ARU40**  
Kit for car wheels with central  
hole  
Ø 42±156 mm (1.65"±6,14")



**8-21100293/90\_ES-7**  
ES-7 width sensor



**8-21100270\_ARV40**  
Premium Medium&Light  
adaptor kit for  
commercial vehicle (6-  
hole).



**8-21100300/90\_RRS-W**  
**Radial Runout Sonar**  
**Wheel**  
for the measurement  
of the tire's radial  
eccentricity



**8-21100301\_RRS-R**  
**Radial Runout Sonar Rim**  
for measuring the wheel  
rim's radial eccentricity

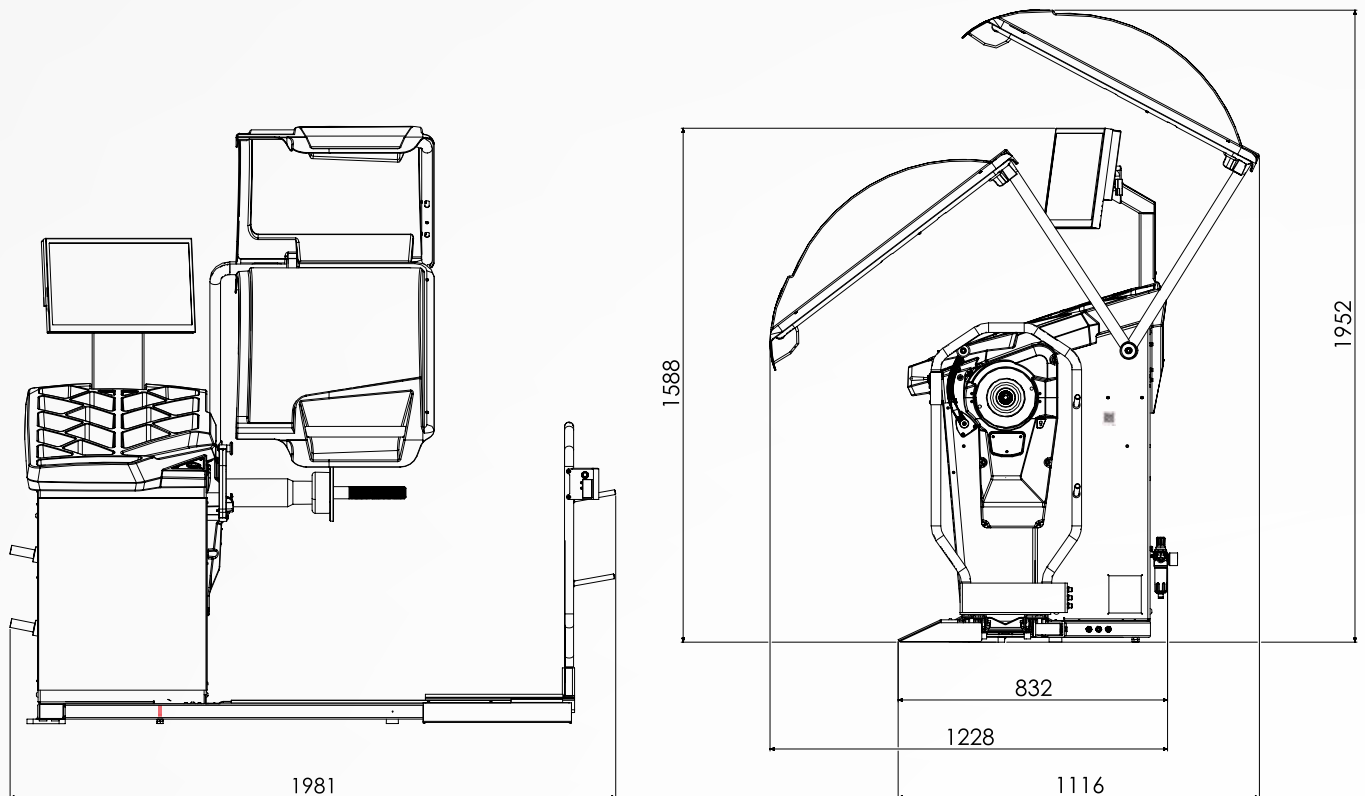


**8-21100302\_LRS-W**  
**Lateral Runout Sonar Wheel**  
for measuring the lateral  
eccentricity of the tire  
sidewall.

## TECHNICAL DATA

Power supply	200 ÷ 230V / 1Ph / 50 ÷ 60Hz - 100 ÷ 115V / 1Ph / 50 ÷ 60Hz
Total power absorption	400 W
Balancing speed	100 rpm car / 80 rpm truck
Shaft diameter	40 mm (1,57")
Supply pressure	8 ÷ 12 bar (120 ÷ 165 psi)
Average measurement time	8 ÷ 16 s
Balancing precision	1 g car / 10 g truck
Settable rim width	1,5" ÷ 20" / 40 ÷ 510 mm
Settable rim diameter	10" ÷ 30" / 265 ÷ 765 mm
Maximum wheel weight (8 bar)	300 kg (660 lb)
Maximum wheel diameter	52" / 1321 mm
Machine weight	260 kg (573 lb)

## DIMENSIONS



The manufacturer reserves the right to modify the features of its products at any time.

Cod. DPSC000689\_03\_2025